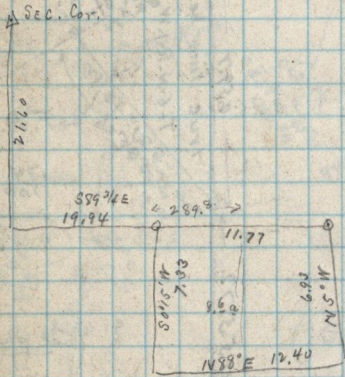


Copy of deed from John Erickson to  
 Wm Smith, dated Oct. 10-1885 S-439  
 Part of N. 1/4 Sec 16 Sp-6-N-R-1-W.  
 ✓ Orig. 21.62 ch S. and 19.94 ch  $589^{\circ}45'E$  from  
 N.W. cor. of said 1/4 Sec, thence  $S 0^{\circ}15' N$  7.33  
 ch.  $N 88^{\circ} E$  12.40 ch,  $N 5^{\circ} W$  6.93 ch  $N 89^{\circ}45' W$   
 11.77 ch to Orig. 8.6 a.



✓ Copy of deed from James M. Wade & wife to  
 Luella Slater, dated May 27-1889 - B-2  
 2-373 - Part of the South West 1/4 of Sec  
 24, T-7-N-R-2-W-1/2, S. L. M. Orig. 12.70  
 ch. W. from N.E. cor. said 1/4 Sec. It 205. ft  
 + inches  $S 4 1/2^{\circ} E$  5.94 ch, thence N.E. to a  
 point  $S 64^{\circ} E$  2 Rods 14 ft 5 inches from the  
 thence  $N 64^{\circ} W$  2 Rods 14 ft 5 " to Orig.

